



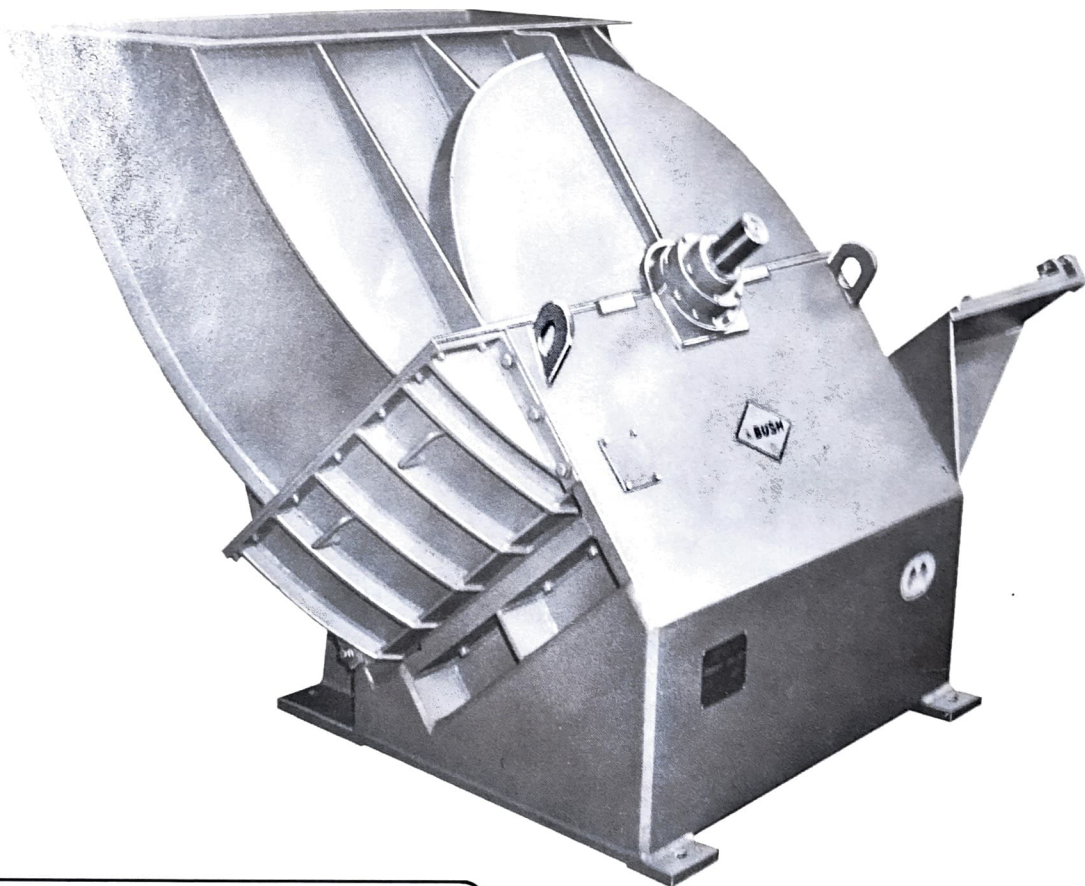
BUSH

LILY-PAD CHIPPERS

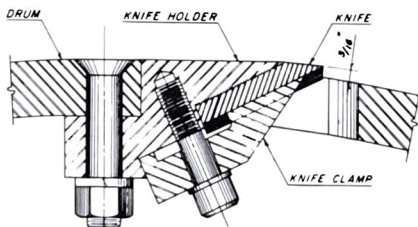
HEAVY DUTY MODEL 6024 or 4024

Here's a Bush Chipper that will take previously wasted, difficult-to-handle lily pads and convert them into high quality chips for additional mill profits. Using the basic concept of the veneer lathe, Bush engineers have perfected a chipper utilizing a series of properly spaced knives clamped to a drum which upon rotation produces controlled dimension chips up to 15 units per hour.

This rugged heavy duty chipper is electrically powered, and directly connected through a Gear Reducer. The positive double roller chain drive, complete with guard, eliminates the slippage factor created by V belt or V flat arrangements, and also lowers maintenance costs. Shipping weight of Model 6024 is approximately 13,000 lbs. Also available is Model 4024, shipping weight, approximately 10,000 lbs.

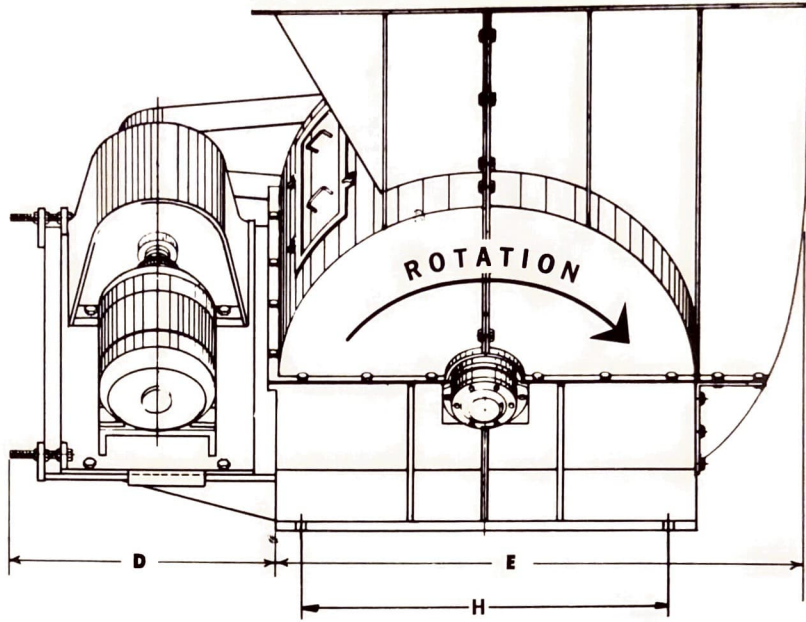


KNIFE CLAMPING ARRANGEMENT

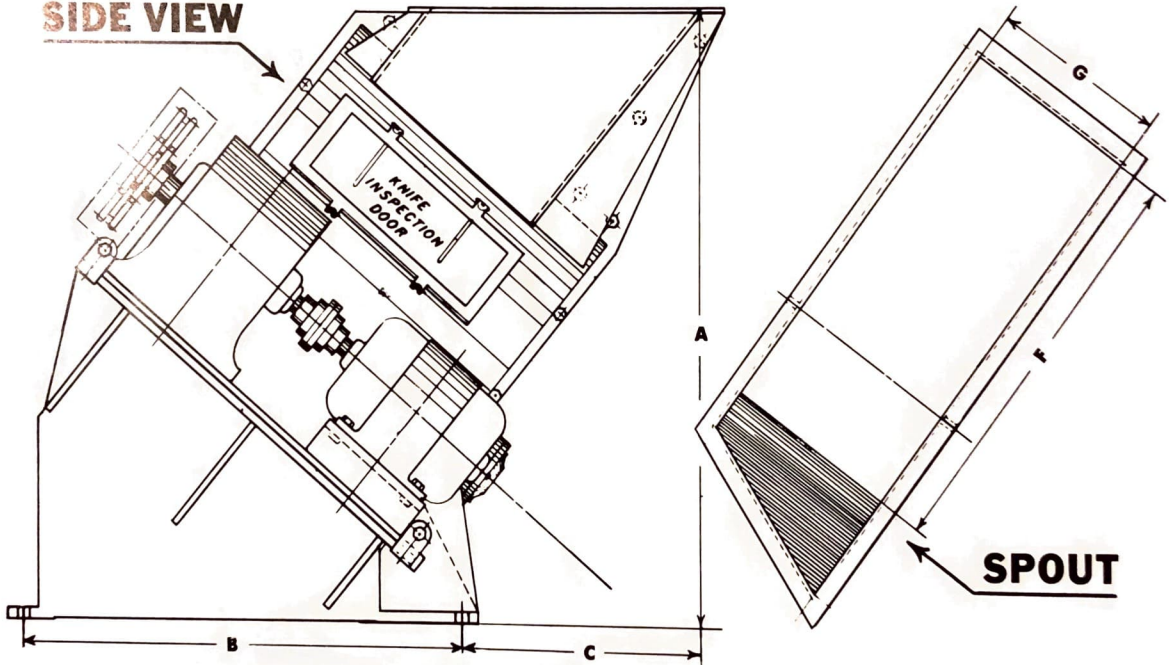


The knives used in Bush Heavy Duty Lily-Pad Chippers have been tested and proven under almost every operating condition. The correct knife overlay, along with coordinated spacing, controls the cutting of quality chips to a maximum extent. Lower knife costs can be achieved when they are serviced on a regular basis. This, along with other proper routine maintenance, will insure a longer operating life for your chipper.

FRONT VIEW



SIDE VIEW



DIMENSIONS	CHIPPER SIZE	A	B	C	D	E	F	G	WT.
	40"	60"	61"	17 ³ / ₈ "	41 ¹ / ₂ "	57"	40"	26 ³ / ₈ "	10,000 lbs.
	60"	75"	61"	29"	41 ¹ / ₂ "	80"	60"	26 ³ / ₈ "	13,000 lbs.

For additional information on Bush Lily Pad Chippers write, wire or phone:

KOCKUMS
Kockum Industries, Inc.

P. O. BOX 4157-9220-B PARKWAY EAST
BIRMINGHAM, AL 35206 - 205/836-4213

P. O. BOX 19358
PORTLAND, OR 97219 - 503/638-4171

TELEX 059-6111

TELEX 036-0414