

# KOCKUMS

## Letson 7 ft. H.S.A. Bandmill Headrig

**Strain System**—Full air strain.\*

**Maximum Design Strain**—44,000 lbs.

**Maximum Strain System Pressure**—176 P.S.I.G. nitrogen charged.

**Maximum Design Saw Speed**—20,000 FPM.

**Standard Saw Speed**—8,610 FPM.

**Total WK<sup>2</sup> at Lower Wheel**—58,000 lbs. ft.<sup>2</sup>.

**Base and Column**—Single piece each, stress relieved weldment.

**Wheels**—

Diameter—7'-0".

Standard face width—12-1/4".

Double cut—10-1/2".

Crown (recommended)—0.0065".

Dynamic balance at specific rim speed=0.09 mils or less.

Bearings—double row spherical roller.

Driven sheave—integral with lower wheel assembly—  
40" P.D., 10 groove 'D' section.

Upper wheel lift motor—7-1/2 HP @ 1200 RPM.

**Saw Guides**—Upper and lower—

Pressure type, single insert, quick change cartridges.

Upper—infinite position, electric elevating c/w brake and motor (3 HP @ 1200 RPM) and c/w single, wide angle spray nozzle.

Lower—inner pressure guide c/w outer shear assembly.

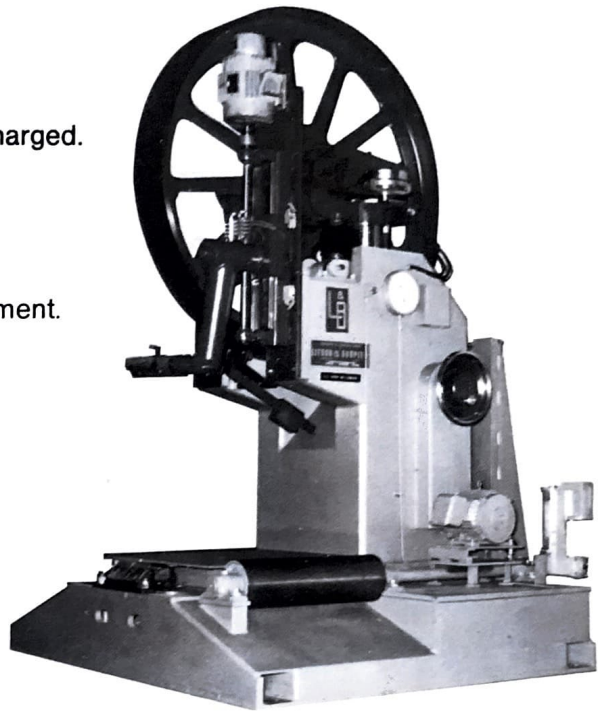
**Sawdust Shear**—Aluminum bar, adjustable.

**Scrapers**—Upper and lower wheels—adjustable brass blade, each c/w single wide angle spray nozzle.

**Standard Electrical Package**—Push button station, limit switches and wire harness to common junction box. All to electrical code requirements.

**Standard Saw Length**—43'-6".

**Weight**—31,000 lbs.



### OPTIONAL ITEMS

**Throat Equipment**—Single or double off bearing rolls c/w table top or slat bed as required.

**Saw Guide Refacing Machine**—115V, 60 HZ, 1 HP @ 23,000 RPM.

**Automatic Lubrication System**—Pneumatic pump and programmable electric timer—115V, 60 HZ.

**Drive Motor**—Standard—~~250~~<sup>350</sup> HP @ 1200 RPM.

**Motor Sheave**—13.5" P.D., 10 groove, 'D' section.

**'V' Belts**—As required.

**Hinged Upper Wheel Guard**—c/w air cylinder and valving.

**Saw Blade**—Recommendations for gauge and tooth form per application.

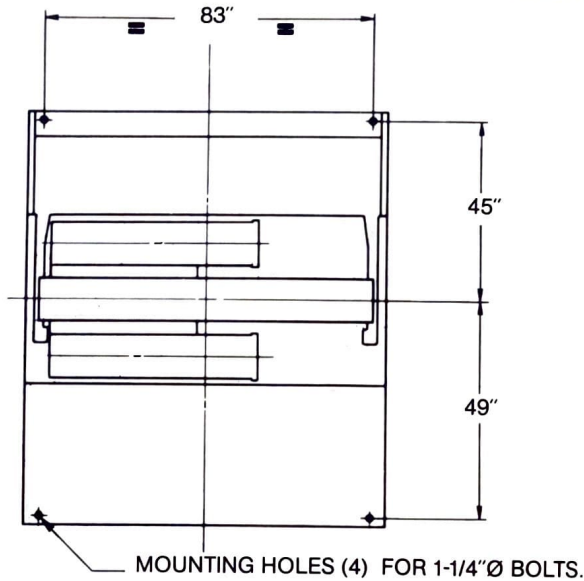
**Handing**—Right or left hand.

**Electrical Systems**—To suit overseas requirements are available.

**Specialty Options**—Are available on request.

7-V-HR 5-75

# Letson 7 ft. H.S.A. Bandmill Headrig



## NOTES:

With off bearing roll—dimension 'A'=37-1/4", dimension 'B'=6-1/2".

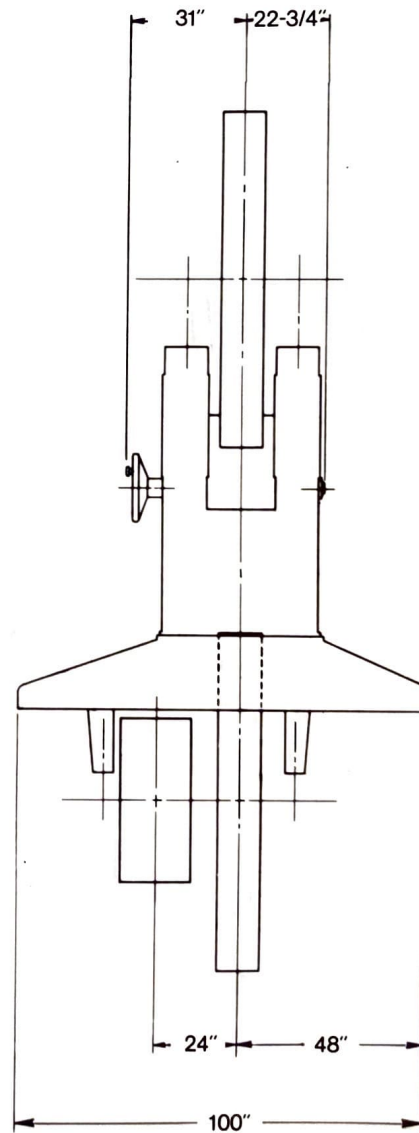
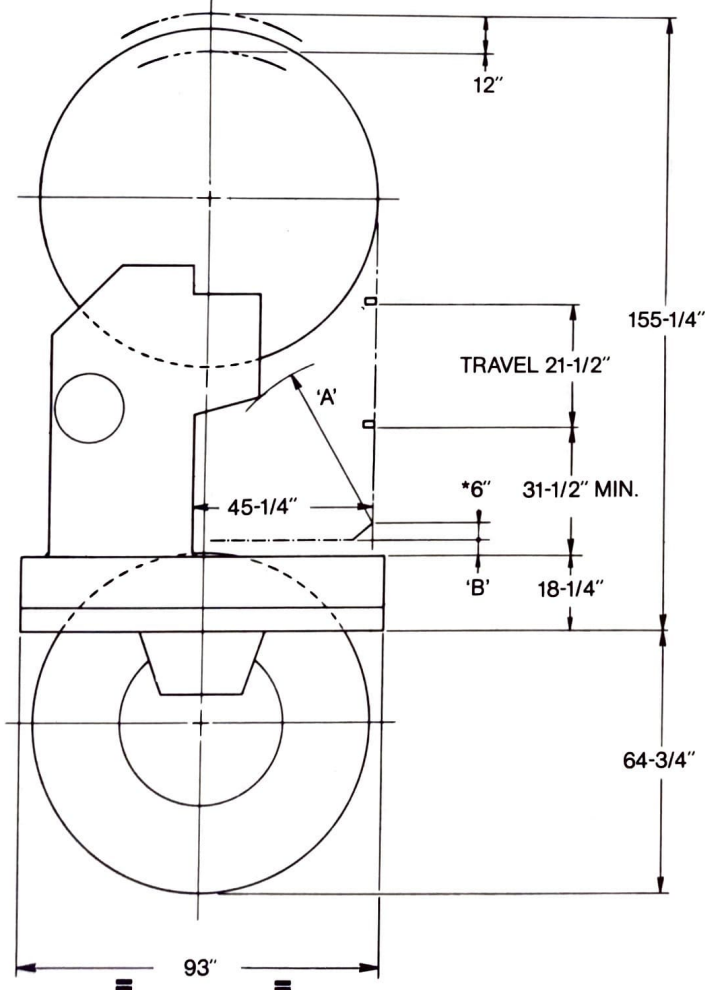
With slatbed—dimension 'A'=34-1/2", dimension 'B'=10-3/8".

\*=nominal dimension. (To suit customer requirements.)

Left hand Bandmill Headrig shown—right hand available.

Standard column shown—extended column available.

Specifications are subject to change—certified data available per application.



**LETSON & BURPEE LTD.**

A DIVISION OF KOCKUM INDUSTRIES

172 Alexander St., VANCOUVER, B.C. V6A 1B7 (604) 682-4721  
13050 88th Avenue, Surrey, B.C.

LITHO IN CANADA O'BREN PRESS

Exclusive Sales Agent

Soderhamn Machine Manufacturing Company

P. O. Box 19358, Portland, Oregon 97219

P. O. Box 978, Talladega, Alabama 35160